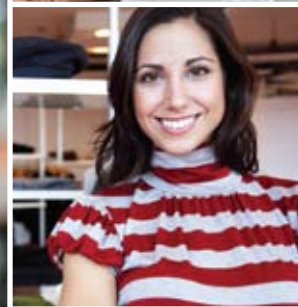




Terminals and POS Solutions Selection Guide



Solutions tailored to you and your customers.

Whatever your business, whoever your customers, wherever and whenever you need us—we are your best choice.



Businesses like you trust us for solutions that provide:

- The choices your customers demand— credit/debit/EBT/ gift/loyalty cards and checks
- Ultra-fast processors and communications hardware
- Compact design with high-speed, built-in printers that streamline sales
- Wi-Fi, IP and dial-up connectivity
- Intuitive touch-screen interfaces
- TeleCheck Electronic Check Acceptance® (ECA®)
- Quick software downloads, so your solutions can grow with your business and you're always up-to-date on the latest processing technology
- Unbeatable service and support
- Competitive pricing



First Data™ Point-of-Sale Terminals



First Data™ FD50 Terminal

The simple, affordable, reliable way to give your customers the choices and security they need.

Ideal for low- to mid-volume businesses that need full-service processing at the lowest possible price.

PAYMENT ACCEPTANCE

- Verifies and processes credit transactions, plus debit/EBT/check transactions with additional peripherals
- Two-track integrated magnetic-stripe reader
- Supports contactless payments with additional peripheral

HIGH-SPEED CONNECTIVITY

- IP connectivity with dial backup

PROCESSING POWER

- 32-bit ultra-fast processor
- 16 MB SDRAM memory
- 16 MB Flash memory

EXPANDABILITY

- 3 USB ports
- 1 serial port
- 1 modem port

DISPLAY AND INTEGRATED PRINTER

- Large, easy-to-read display
- 2.25"-wide thermal roll printer with drop-in paper loading

SECURITY

- Address Verification Service
- Secure Sockets Layer (SSL) encryption



First Data™ FD100 Terminal

Versatile, secure, reliable, affordable and expandable to grow with your business.

The best choice for mid-volume businesses as they adapt to increased needs.

- Verifies and processes credit transactions, plus debit/EBT/check transactions with additional peripherals
- Three-track integrated magnetic-stripe reader
- Supports contactless payments with additional peripheral

- IP connectivity with dial backup
- Optional Wi-Fi¹

- 32-bit ultra-fast processor
- 32 MB SDRAM memory
- 32 MB Flash memory

- 4 USB ports
- 2 serial ports
- 1 phone port
- 1 modem port

- Touch-screen LCD display with 128 x 64 graphics
- 3"-wide thermal roll printer with drop-in paper loading

- Address Verification Service
- Secure Sockets Layer (SSL) encryption

¹Wi-Fi terminals are separate products. Wi-Fi supports only the WPA-PSK Security Mode with the TKIP Encryption Mode. Your routers must support this configuration in order to use these terminals on your wireless LAN.



First Data™ FD200 Terminal

Check reader/imager and POS terminal in one compact unit for all types of payments.

Perfect for any business that processes lots of checks, as well as other payment options.

- Verifies and processes credit transactions, plus debit/EBT transactions with additional peripherals
- Built-in check reader/imager and 32-bit ARM9 CPU support TeleCheck Electronic Check Acceptance® (ECA®) service
- Three-track integrated magnetic-stripe reader
- Supports contactless payments with additional peripheral

- IP connectivity with dial backup
- Optional Wi-Fi¹

- 32-bit ultra-fast processor
- 32 MB SDRAM memory
- 32 MB Flash memory

- 4 USB ports
- 2 serial ports
- 1 phone port
- 1 modem port

- Touch-screen LCD display with 128 x 64 graphics
- 3"-wide thermal roll printer with drop-in paper loading
- Inkjet defacement printer for voiding checks

- Address Verification Service
- Secure Sockets Layer (SSL) encryption



First Data™ FD300 Terminal

Simultaneous, single-terminal support for multiple merchants and payment types.

The all-in-one terminal solution for locations with multiple "businesses" or "merchants."

- Verifies and processes credit transactions, plus debit transactions with additional peripherals
- Supports up to 99 individual merchants—each with a unique identifier, from a single terminal
- Three-track integrated magnetic-stripe reader
- Supports contactless payments with additional peripheral

- IP connectivity with dial backup
- Optional Wi-Fi¹

- 32-bit ultra-fast processor
- 32 MB SDRAM memory
- 32 MB Flash memory

- 4 USB ports
- 2 serial ports
- 1 phone port
- 1 modem port

- Touch-screen 1/4 VGA color display with 320 x 240 graphics
- 3"-wide thermal roll printer with drop-in paper loading

- Address Verification Service
- Secure Sockets Layer (SSL) encryption



First Data™ FD400 Wireless Terminal

One lightweight, hand-held device that does the work of three—wherever your sales take place.

The terminal of choice for on-the-go businesses.

- Verifies and processes credit/debit/EBT/check transactions
- Three-track integrated magnetic-stripe reader

- Wireless cellular connectivity
- Supports 3G mobile technologies

- 32-bit ultra-fast processor
- 32 MB SDRAM memory
- 32 MB Flash memory

- 1 USB port

- Touch-screen 2.5" display with 320 x 240 graphics
- 2.25"-wide thermal roll printer with drop-in paper loading

- Address Verification Service
- Wireless Transport Layer Security (WTLS) encryption
- MasterCard® PTS certified, PCI-PED certified



First Data™ Point-of-Sale Peripherals

Enhance your customers' payment experience—make PIN-based payments, initiate their own transactions, make contactless payments—with sophisticated technology that complies with the latest Payment Card Industry requirements for security and fraud protection.

First Data™ FD-30 PIN Pad—All-inclusive convenience: accepts PIN-based debit, traditional card swipe and new contactless payments.

First Data™ FD-20 Contactless Reader—Customers pay quickly with the wave of a contactless card, key fob or other specially equipped device.

First Data™ FD-10C PIN Pad—Includes an integrated card reader for added security and convenience.

First Data™ FD-10 PIN Pad—Puts the convenience of PIN-secured debit payment in the palm of your customer's hand.

**For More Information,
Please Contact:**

Michael Psikarakis
at: (774) 287.1288
michael@fdisma.com



Services by Cardservice International.

© 2009 First Data Corporation. All Rights Reserved. All trademarks, service marks and trade names referenced in this material are the property of their respective owners. The First Data Independent Sales Agent Program is operated by Cardservice International, Inc. Cardservice International, doing business as First Data Independent Sales (FDIS), is a registered ISO/MSP of Wells Fargo Bank, N.A., Walnut Creek, CA. American Express requires separate approval.

FDIS (Geographic DBA Name or Agent #00000) is an independent agent for Cardservice International.

Agent Office # 36029



First Data™ Global Gateway Virtual Terminal

Turns any Internet-connected PC into a POS device without installing software.

- **Customer and merchant convenience**—quickly accepts and processes credit cards, PIN-secured ATM/debit cards, electronic checks and gift cards. Supports up to 200-item product catalog. Completes transactions and end-of-day closeouts from any Internet-connected PC
- **Flexibility**—grant transaction capability to any number of users. Generate automatic tax calculations, custom receipts and online reports. Schedule recurring billing
- **Security**—128-bit Secure Sockets Layer (SSL) encryption. Fraud protection tools. We securely maintain all cardholder data
- **Affordability and reliability**—eliminates software installations, upgrades and system maintenance, plus includes online support



First Data® Payment Software for Windows®

PC-based credit, debit and purchasing-card software—a cost-effective alternative to traditional POS equipment.

- **Reduces processing costs**—one-time fee for licensing instead of recurring "per click" fees. Eliminates stand-alone terminals
- **Saves time for merchants and consumers**—quickly accepts and processes credit cards, PIN-secured ATM/debit cards, electronic checks and gift cards. Recurring and installment transaction billing. Easy end-of-day closeouts
- **Corporate purchasing capability**—supports Visa®, MasterCard® and American Express® corporate purchasing-card transactions
- **Top-quality security and data encryption**—with Payment Application Best Practices (PABP) validated by Visa
- **Application versatility**—integrates with existing POS software. Networks multiple installations to form a multi-station terminal. Archives transaction history for up to nine years for more comprehensive reporting